

**CHICAGO FAUCETS** 

a Geberit company

2100 South Clearwater Drive  
Des Plaines, IL 60018  
Phone: 847-803-5000  
Fax: 847-803-5454  
www.chicagofaucets.com

# REPAIR PARTS

BY: SID DATE: 05-22-12

CHK: *SR* REV: 03-14-16

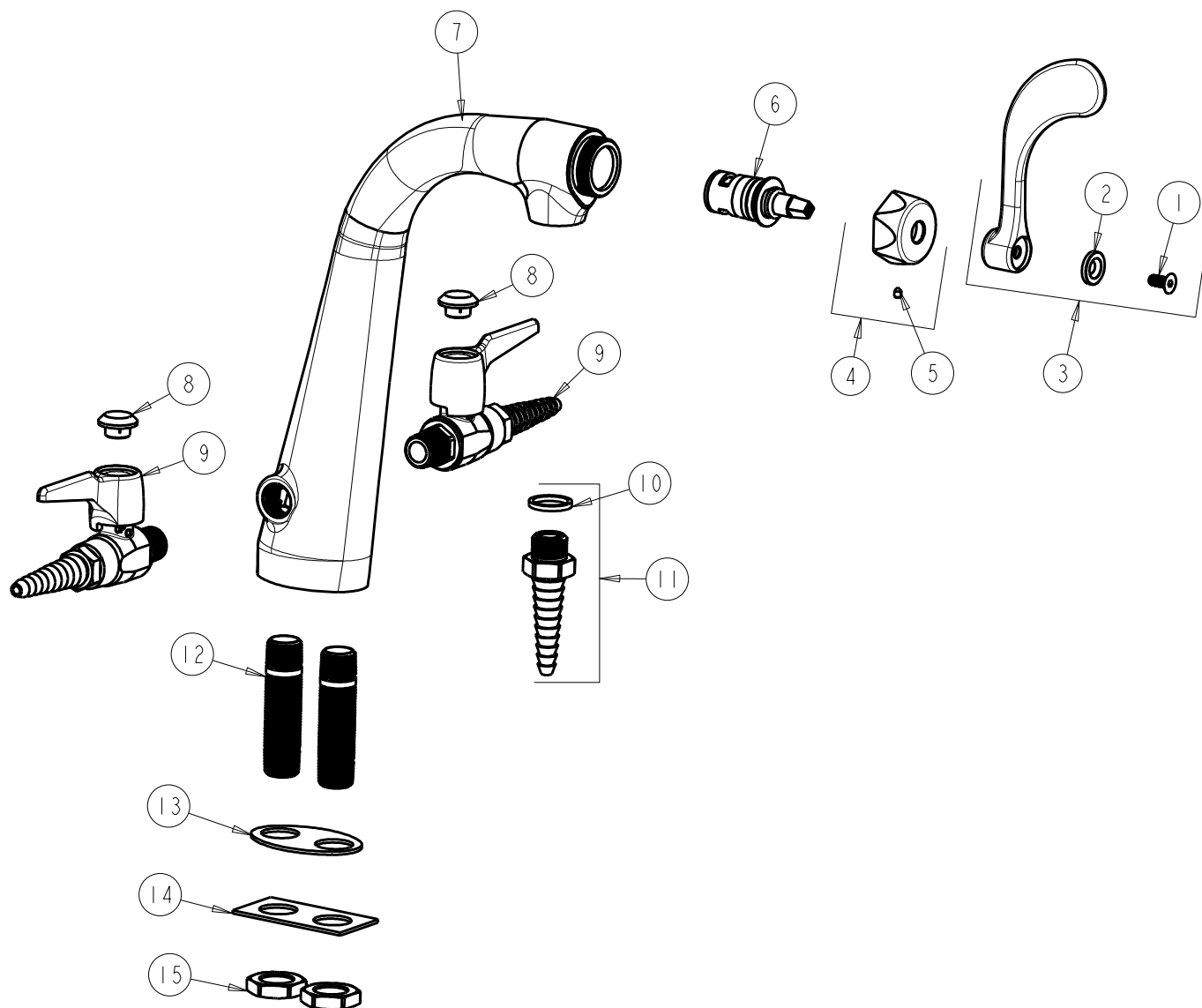
FITTING NO.

1332-317XKCP

SUBMITTED MODEL NO.

ITEM NO.

**FOR TECHNICAL ASSISTANCE**  
1-800-TEC-TRUE (1-800-832-8783)



ITEM	PART NO.	DESCRIPTION	ITEM	PART NO.	DESCRIPTION
1	420-020JKNF	SCREW, 1/8 FLAT HEX HEAD X 1/2	9	909-CLEB	BALL VALVE w/ CHECK VALVE
2	633-123JKNF	INDEX BUTTON (BLUE)	10	229-003JKABNF	WASHER
3	317-COLDJKCP	WRISTBLADE HANDLE	11	E7JKCP	SERRATED HOSE NOZZLE
4	444-105JKCP	VP CAP NUT WITH VR SCREW	12	-----	MALE SHANK 2-5/8 X 3/8
5	1332-005JKNF	SCREW, VANDAL RESISTANT	13	1332-003JKNF	GASKET
6	1-100XKJKABNF	LH CERAMIC CARTRIDGE 1/4	14	1332-002JKNF	PLATE
7	-----	VALVE BODY (NOT SOLD SEPARATELY)	15	705-008JKRBF	NUT
8	216-328JKNF	BUTTON 'GAS'			