

CHICAGO FAUCETS
a Geberit company

2100 South Clearwater Drive
Des Plaines, IL 60018
Phone: 847-803-5000
Fax: 847-803-5454
www.chicagofaucets.com

REPAIR PARTS

FITTING NO.

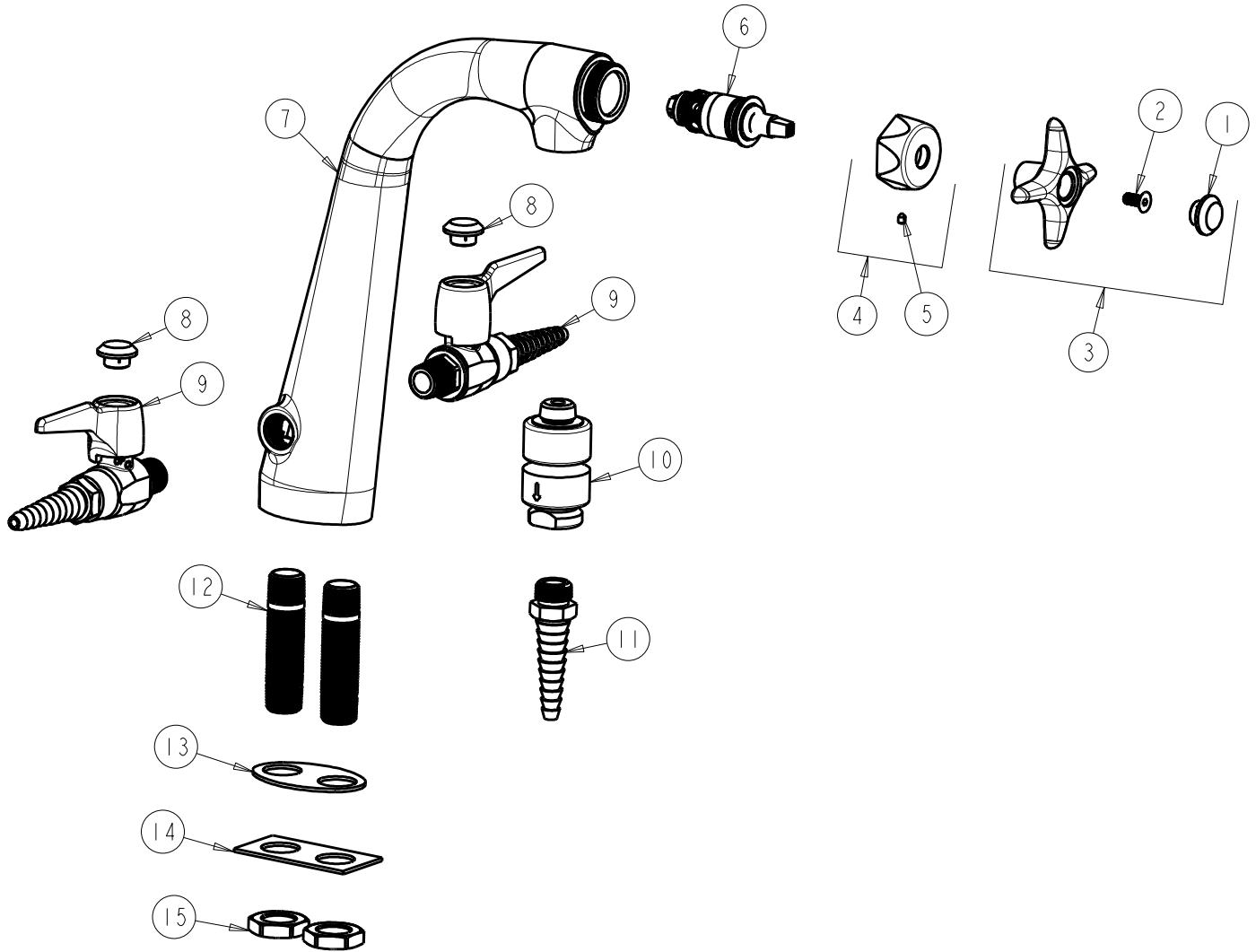
1332-E22E7CP

SUBMITTED MODEL NO.

ITEM NO.

BY: SID DATE: 05-07-01
CHK: *AK* REV: 03-15-16

FOR TECHNICAL ASSISTANCE
1-800-TEC-TRUE (1-800-832-8783)



ITEM	PART NO.	DESCRIPTION	ITEM	PART NO.	DESCRIPTION
1	216-178JKNF	BUTTON 'CW'	9	909-CLEB	BALL VALVE w/ CHECK VALVE
2	420-020JKNF	SCREW, 1/8 FLAT HEX HEAD X 1/2	10	E22JKCP	VACUUM BREAKER
3	205-CWJKNF	PLASTIC HANDLE ASSEMBLY	11	E7TJKCP	SERRATED NOZZLE OUTLET 3/8 NPT
4	444-105JKCP	VP CAP NUT WITH VR SCREW	12	-----	MALE SHANK 2-5/8 X 3/8
5	1332-005JKNF	SCREW, VANDAL RESISTANT	13	1332-003JKNF	GASKET
6	217-XTLHJKABNF	CARTRIDGE, SLO-COMPRESSION (LH)	14	1332-002JKNF	PLATE
7	-----	VALVE BODY (NOT SOLD SEPARATELY)	15	705-008JKRBF	NUT
8	216-328JKNF	BUTTON 'GAS'			