

**CHICAGO FAUCETS**  
a Geberit company

2100 South Clearwater Drive  
Des Plaines, IL 60018  
Phone: 847-803-5000  
Fax: 847-803-5454  
www.chicagofaucets.com

# REPAIR PARTS

BY: JAR      DATE: 09-10-09  
CHK:        REV: 03-15-16

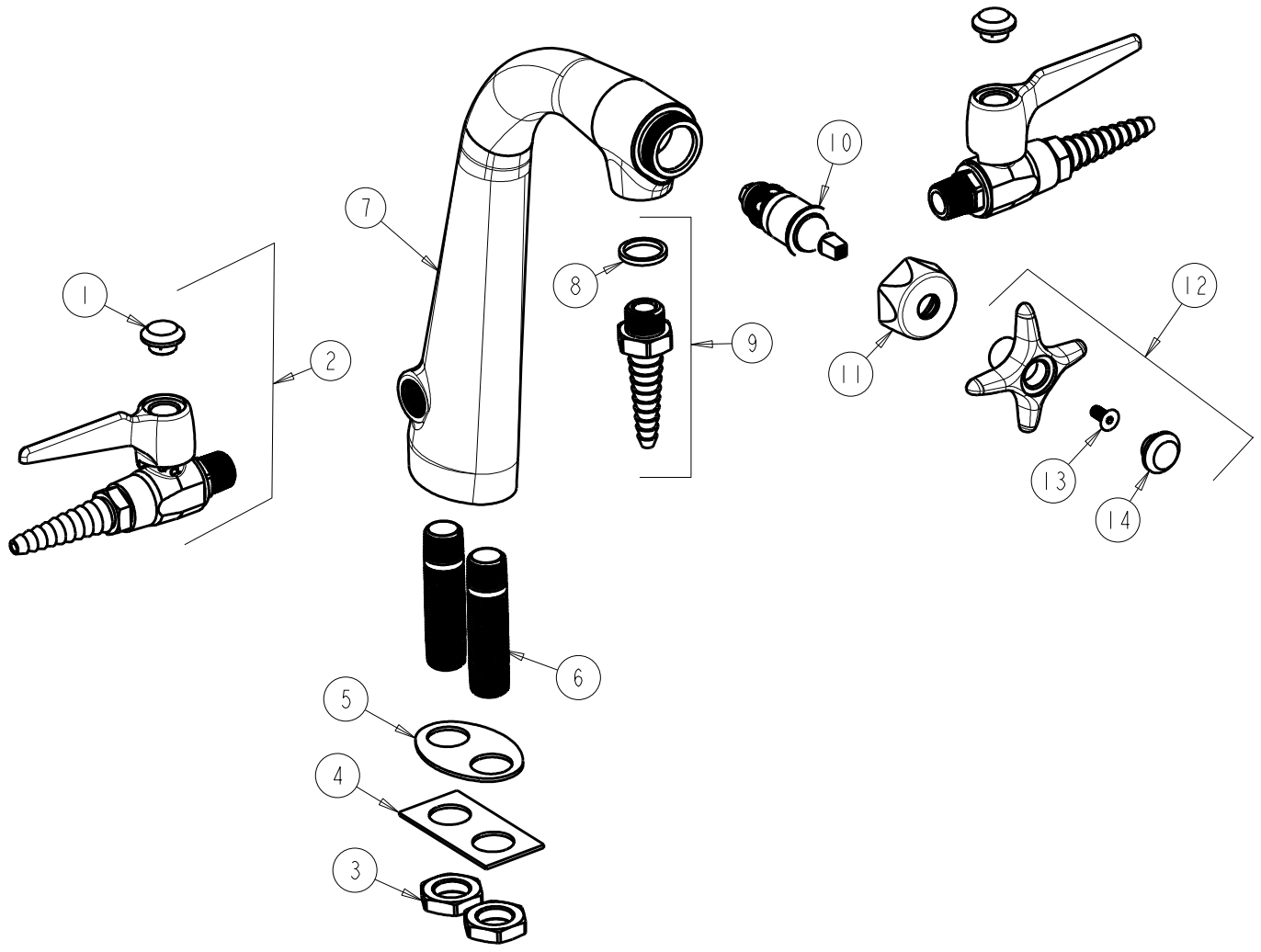
FITTING NO.

**1332-SAM**

SUBMITTED MODEL NO.

ITEM NO.

**FOR TECHNICAL ASSISTANCE**  
1-800-TEC-TRUE (1-800-832-8783)



ITEM	PART NO.	DESCRIPTION
1	216-328JKNF	BUTTON 'GAS'
2	909-CAGJKSAM	BALL VALVE w/ CHECK VALVE
3	705-008JKRBF	NUT
4	1332-002JKNF	PLATE
5	1332-003JKNF	GASKET
6	-----	MALE SHANK 2-5/8 X 3/8
7	-----	VALVE BODY (NOT SOLD SEPARATELY)
8	229-003JKABNF	WASHER
9	E7JKSAM	SERRATED HOSE NOZZLE
10	217-XTLHJKABNF	CARTRIDGE, SLO-COMPRESSION (LH)
11	444-005JKSAM	CAP
12	205-CWJKNF	PLASTIC HANDLE ASSEMBLY
13	420-020JKNF	SCREW, 1/8 FLAT HEX HEAD X 1/2
14	216-178JKNF	BUTTON 'CW'