



a Geberit company

2100 South Clearwater Drive
Des Plaines, IL 60018
Phone: 847-803-5000
Fax: 847-803-5454
www.chicagofaucets.com

REPAIR PARTS

BY: SID DATE: 01-16-13

CHK: *[Signature]* REV:

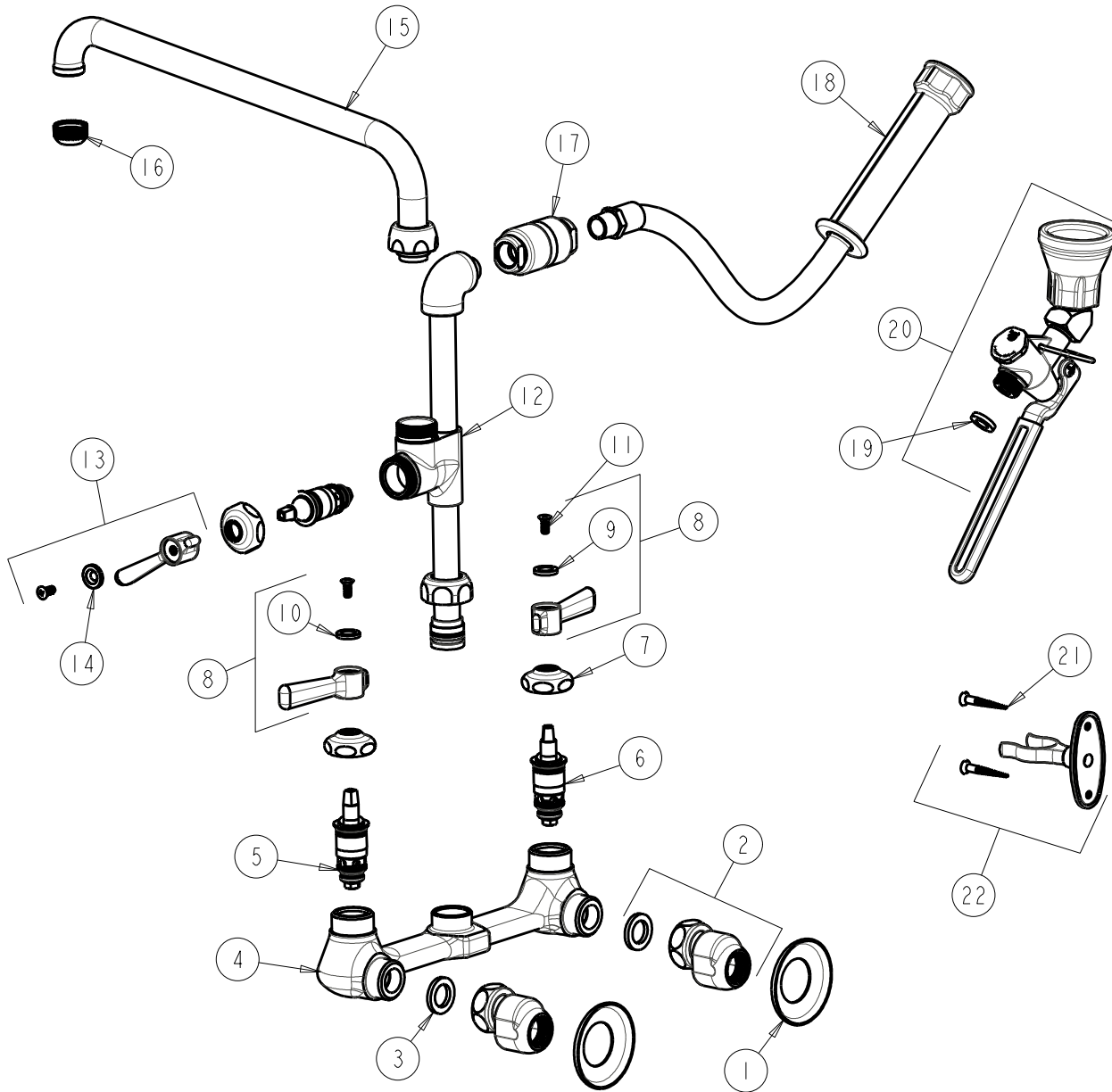
FITTING NO.

509-GCVBL12ABCP

SUBMITTED MODEL NO.

ITEM NO.

FOR TECHNICAL ASSISTANCE
1-800-TEC-TRUE (1-800-832-8783)



| ITEM | PART NO. | DESCRIPTION | ITEM | PART NO. | DESCRIPTION |
|------|---------------|----------------------------------|------|---------------|----------------------------------|
| 1 | 1-055JKCP | FLANGE | 12 | ----- | VALVE BODY (NOT SOLD SEPARATELY) |
| 2 | GCJKABCP | ARM ASSEMBLY 'GC' WITH WASHER | 13 | 369-PLJKCP | PLAIN LEVER HANDLE |
| 3 | 1-011JKNF | WASHER, .97 X .62 X .12 | 14 | 633-223JKNF | INDEX BUTTON (WHITE) |
| 4 | ----- | VALVE BODY (NOT SOLD SEPARATELY) | 15 | L12LESSE3JKCP | SPOUT |
| 5 | 1-099XTJKABNF | QUATURN CARTRIDGE (RH) | 16 | E1JKABRCF | QUIXTOP OUTLET |
| 6 | 1-100XTJKABNF | QUATURN CARTRIDGE (LH) | 17 | SP3524KJKABCP | BACK-FLO PREVENTER |
| 7 | 1-214JKCP | CAP | 18 | 83-44NF | HOSE & HANDLE |
| 8 | 369-PRJKCP | LEVER HANDLE ASSEMBLY (PAIR) | 19 | 919-243JKNF | GASKET, .685 X .375 X .125 |
| 9 | 633-023JKNF | INDEX BUTTON (RED) | 20 | 90-ANGABCP | PRE-RINSE ANGLE VALVE LOW FLOW |
| 10 | 633-123JKNF | INDEX BUTTON (BLUE) | 21 | 173-006JKCP | FLAT HEAD WOOD SCREW |
| 11 | 420-010JKRCF | SCREW, 10-32 UNC PH 1/2 | 22 | 853-CP | WALL HOOK ASSEMBLY |