



a Geberit company

2100 South Clearwater Drive  
Des Plaines, IL 60018  
Phone: 847-803-5000  
Fax: 847-803-5454  
www.chicagofaucets.com

# REPAIR PARTS

BY: JAR DATE: 01-24-13

CHK: REV: 07-28-14

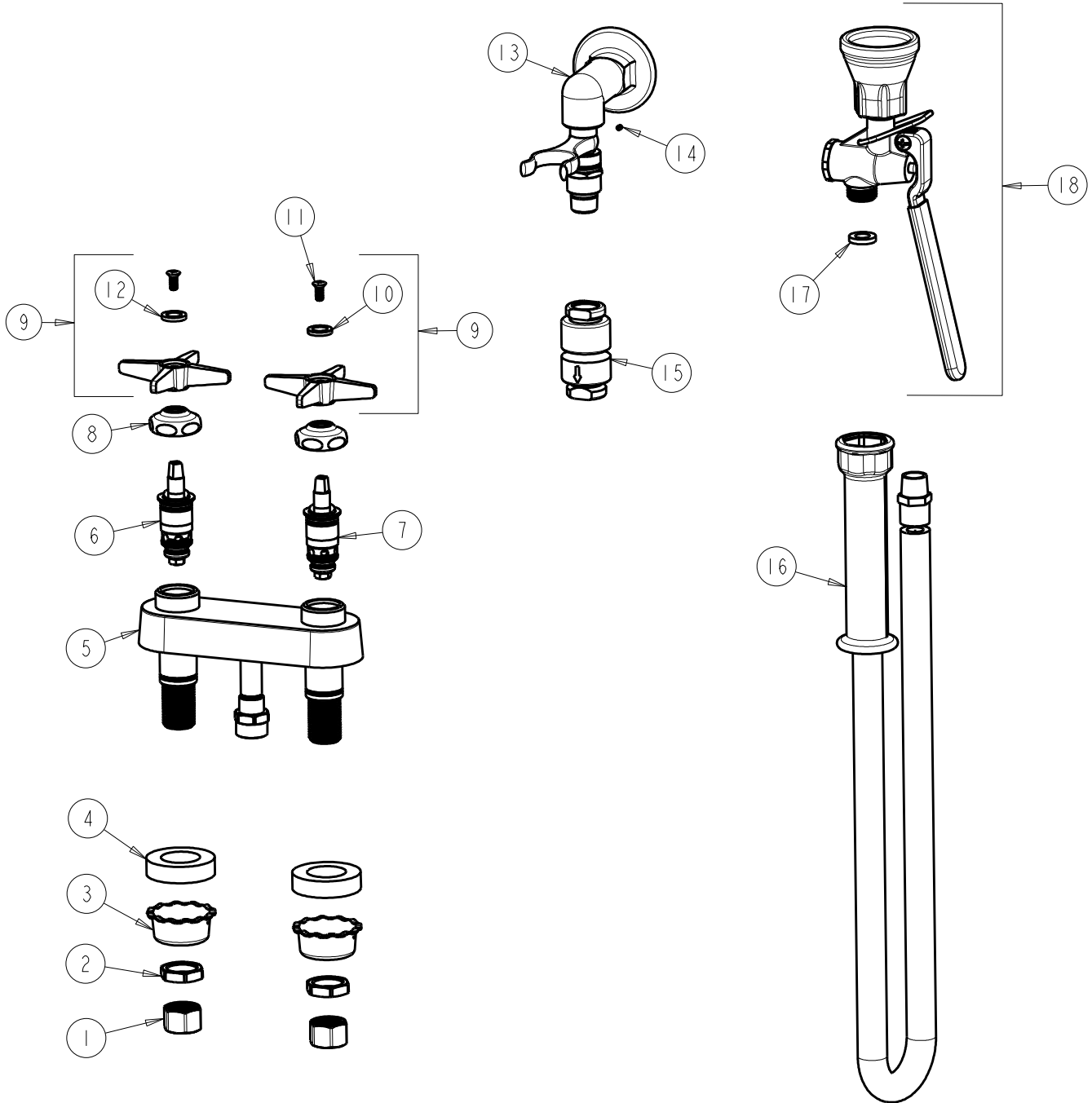
FITTING NO.

524-VBABCP

SUBMITTED MODEL NO.

ITEM NO.

**FOR TECHNICAL ASSISTANCE**  
1-800-TEC-TRUE (1-800-832-8783)



| ITEM | PART NO.      | DESCRIPTION                    | ITEM | PART NO.      | DESCRIPTION                |
|------|---------------|--------------------------------|------|---------------|----------------------------|
| 1    | 49-005JKRBF   | COUPLING NUT                   | 10   | 633-123JKNF   | INDEX BUTTON (BLUE)        |
| 2    | 49-004JKRBF   | LOCKNUT                        | 11   | 420-010JKRCF  | SCREW, 10-32 UNC PH 1/2    |
| 3    | 1797-114JKNF  | BASIN COCK WASHER              | 12   | 633-023JKNF   | INDEX BUTTON (RED)         |
| 4    | 555-313JKNF   | WASHER                         | 13   | -----         | NOT SOLD SEPARATELY        |
| 5    | -----         | VALVE BODY NOT SOLD SEPARATELY | 14   | 777-013JKNF   | SCREW, SET 6-32 X 1/8      |
| 6    | 1-100XTJKABNF | QUATURN CARTRIDGE (LH)         | 15   | SP3524KJKABCP | BACK-FLO PREVENTER         |
| 7    | 1-099XTJKABNF | QUATURN CARTRIDGE (RH)         | 16   | 83-44ABNF     | HOSE & HANDLE 44"          |
| 8    | 1-214JKCP     | CAP                            | 17   | 919-243JKABNF | GASKET, .685 X .375 X .125 |
| 9    | 633-PRJKCP    | 4-ARM HANDLE ASSEMBLY          | 18   | 90-LABCP      | PRE-RINSE VALVE, LOW FLOW  |