

CHICAGO FAUCETS
a Geberit company

2100 South Clearwater Drive
Des Plaines, IL 60018
Phone: 847-803-5000
Fax: 847-803-5454
www.chicagofaucets.com

REPAIR PARTS

BY: JAR DATE: 10-02-02
CHK: *JAR* REV: 12-01-16

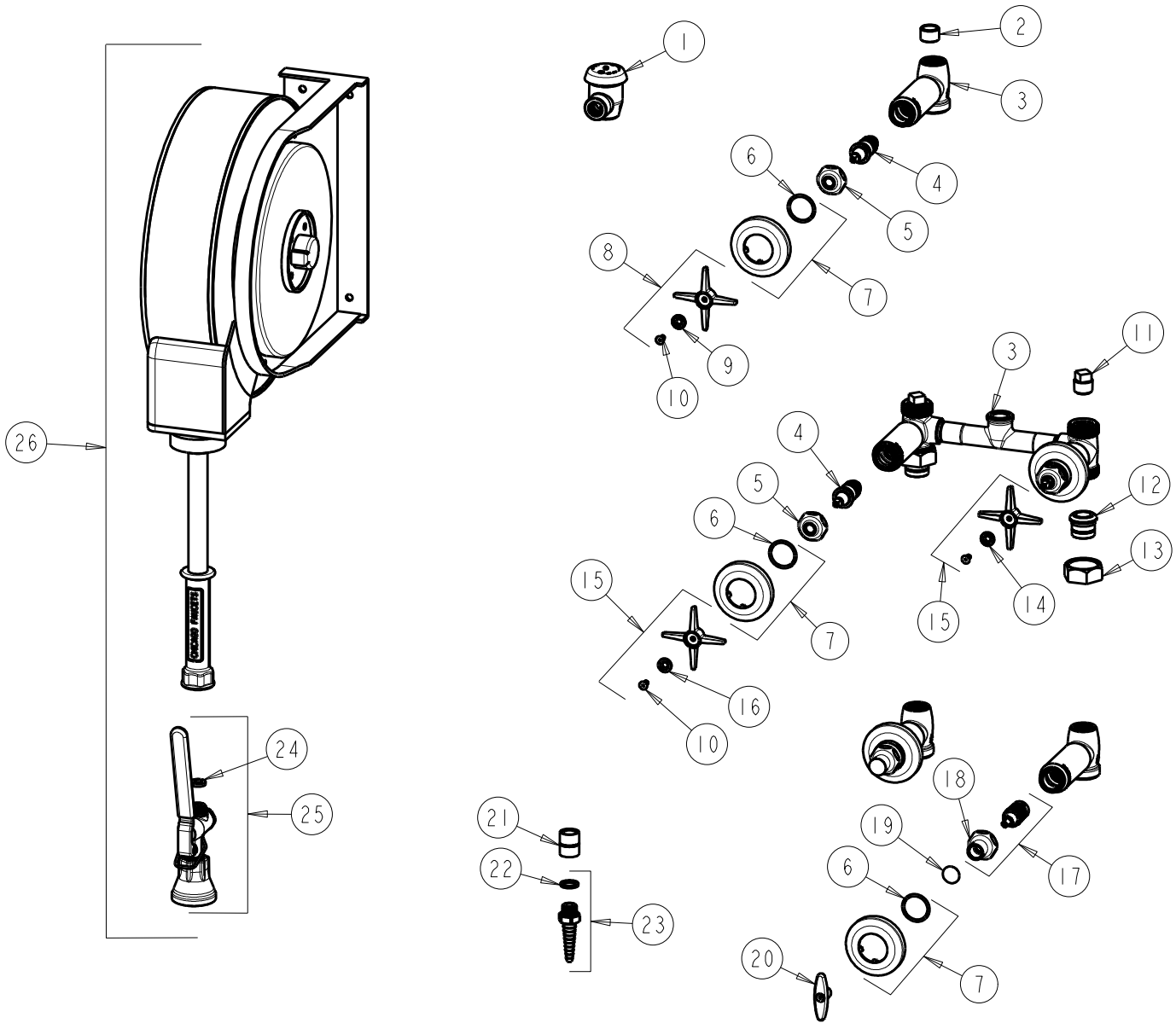
FITTING NO.

536-537WCNF

SUBMITTED MODEL NO.

ITEM NO.

FOR TECHNICAL ASSISTANCE
1-800-TEC-TRUE (1-800-832-8783)



ITEM	PART NO.	DESCRIPTION	ITEM	PART NO.	DESCRIPTION
1	893-ABCP	FOR PARTS SEE 893	14	633-123JKNF	INDEX BUTTON (BLUE)
2	-----	BUSHING	15	633-PRJKCP	4-ARM HANDLE ASSEMBLY
3	-----	VALVE BODY (NOT SODL SEPARATELY)	16	633-023JKNF	INDEX BUTTON (RED)
4	217-XTLHJKABNF	CARTRIDGE, SLO-COMPRESSION (LH)	17	376-CXJKABNF	SLO-COMP INTEGRAL CHECK UNIT
5	1-214JKCP	CAP	18	1-246JKCP	NUT, CAP LOOSE KEY 1-1/8-18 UNEF
6	5235-107JKNF	O-RING	19	1-144JKCP	BUTTON
7	633-201JKCP	FLANGE & O-RING	20	293-006JKRCF	TEE HANDLE (INCLUDES SCREW)
8	633-PLJKCP	4-ARM CROSS HANDLE	21	777-027JKABCP	COUPLING
9	633-223JKNF	INDEX BUTTON (WHITE)	22	229-003JKABNF	WASHER
10	420-020JKNF	SCREW, 1/8 FLAT HEX HEAD X 1/2	23	E7FCJKCP	NOZZLE
11	234-032JKABRCF	1/2 NPT PLUG	24	919-243JKABNF	GASKET, .685 X .375 X .125
12	177-003JKABRBF	UNION TAILPIECE	25	90-HABCP	SPRAY, FOR PARTS SEE 90-HABCP
13	177-002JKCP	UNION NUT	26	537-WCNF	HOSE REEL