

**CHICAGO FAUCETS**

a Geberit company

2100 South Clearwater Drive  
Des Plaines, IL 60018  
Phone: 847-803-5000  
Fax: 847-803-5454  
www.chicagofaucets.com

**FOR TECHNICAL ASSISTANCE**  
1-800-TEC-TRUE (1-800-832-8783)

**REPAIR PARTS**

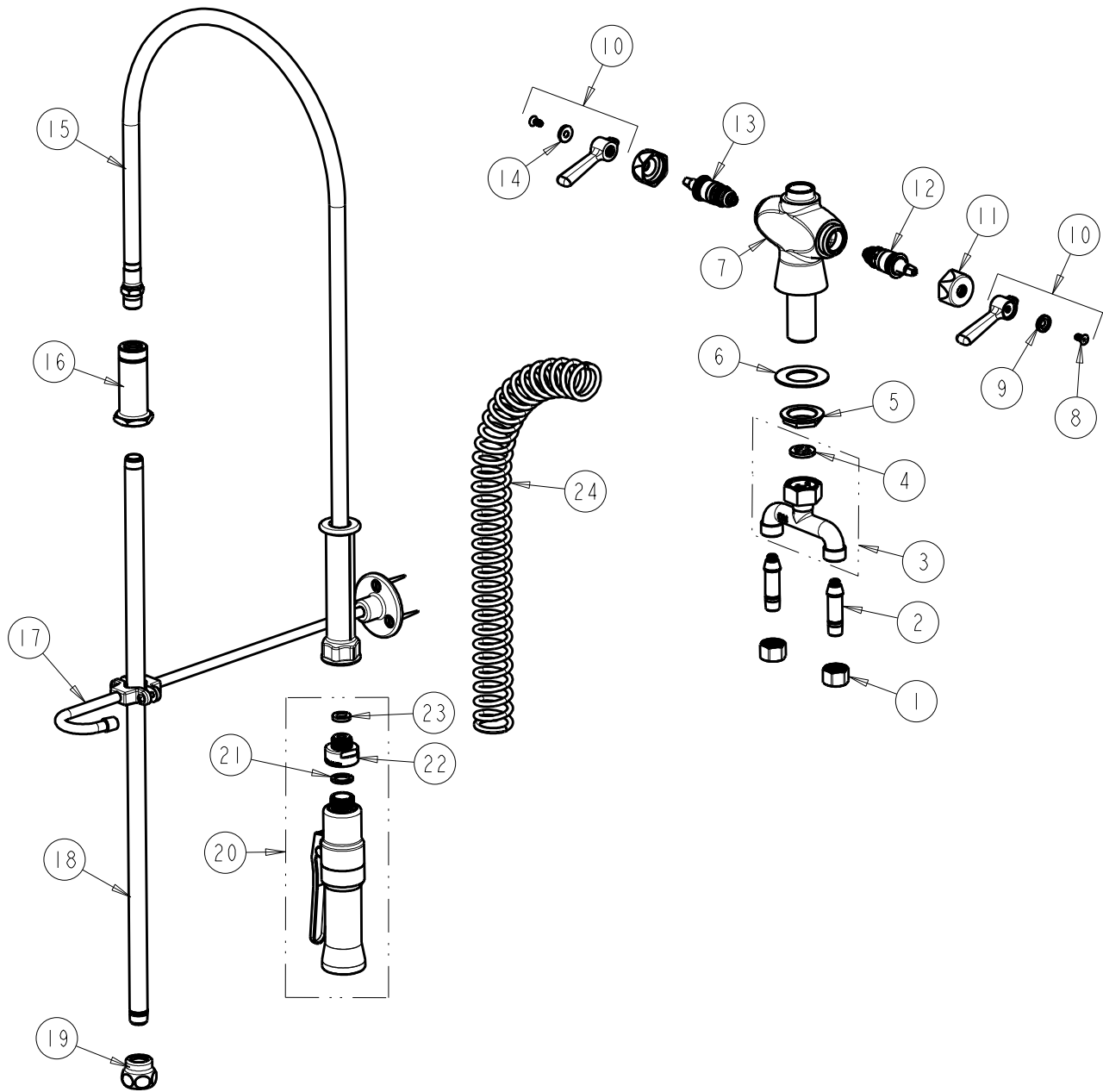
BY: JAR DATE: 03-24-15  
CHK: *JAR* REV:

FITTING NO.

**919-ASABCP**

SUBMITTED MODEL NO.

ITEM NO.



ITEM	PART NO.	DESCRIPTION	ITEM	PART NO.	DESCRIPTION
1	49-005JKRBF	COUPLING NUT	13	1-100XTJKABNF	QUATURN CARTRIDGE (LH)
2	58-018KJKABRBF	TAILPIECE	14	633-023JKNF	INDEX BUTTON (RED)
3	50-010KJKABRBF	TEE CONNECTION ASSEMBLY	15	83-44ABNF	44" HOSE AND HANDLE ASSEMBLY
4	50-008JKABNF	RUBBER WASHER	16	919-038JKABCP	GUIDE SHANK
5	50-003JKRBF	LOCKNUT	17	902-MHJKCP	PIPE STRAP AND HOOK ASSEMBLY
6	50-014JKNF	STEEL WASHER	18	919-039JKABCP	3/8" NPT X 23" RISER
7	-----	VALVE BODY (NOT SOLD SEPARATELY)	19	BA2JKABCP	ADAPTER 3/8 NPT X 1 1/16-18 UNEF
8	420-020JKNF	SCREW, 1/8 FLAT HEX HEAD X 1/2	20	99-ASAB	ADJUSTABLE SPRAY PRE-RINSE VALVE
9	633-123JKNF	INDEX BUTTON (BLUE)	21	919-244JKABNF	GASKET, .825 X .590 X .072
10	369-PRJKCP	HANDLE, 2-3/8" LEVER (PAIR)	22	919-046JKABRCF	ADAPTER, PRE-RINSE
11	444-005JKCP	CAP	23	919-243JKABNF	GASKET, .685 X .375 X .125
12	1-099XTJKABNF	QUATURN CARTRIDGE (RH)	24	919-014JKCP	SPRING